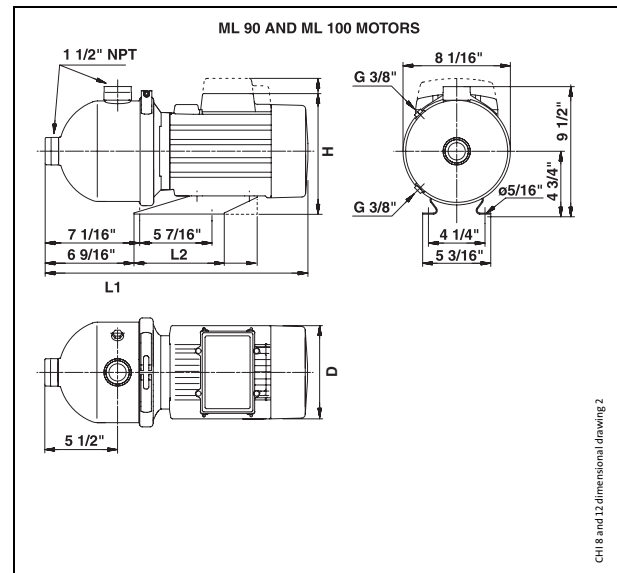
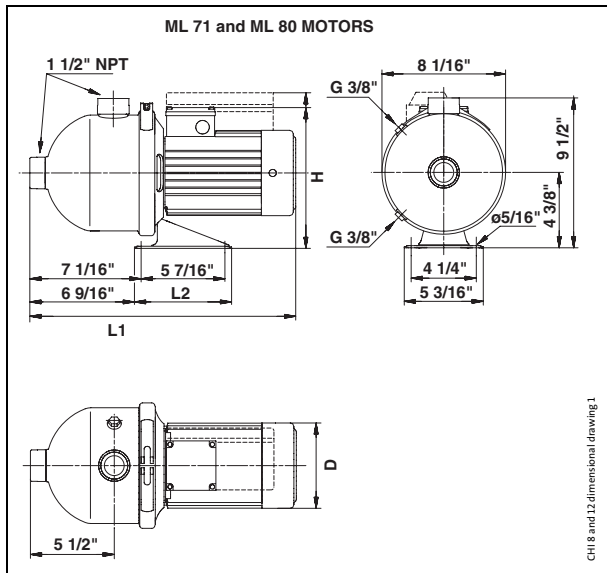


## Dimensional sketches



## Dimensions/weights/electrical data

Pump Type	Electrical Data						Dimensions [in.]				Motor type	Ship Wt. [lbs.]	Ship Vol. [ft <sup>3</sup> ]
	Hp	Ph	Voltage	Service Factor	Rated Current [A]	Maximum Current [A]	L1	L2	H	D			
CHI 12-05	1/2	1	115/230	1.5	7.7/4.0	9.0/4.5	15 5/8	6 3/8	10	5 5/8	ML 71	32	1.4
	1/2	3	208-230/460	1.7	2.5/1.3	2.9/1.45	15 5/8	6 3/8	9 1/16	5 5/8	ML 71	28	
	1/2	3	575	1.7	1.04	1.77	15 5/8	6 3/8	9 1/16	5 5/8	ML 71	28	
CHI 12-10	1 1/2	1	115/230	1.4	19.3/9.7	21.5/10.7	19 11/16	6 13/16	10 1/4	7	ML 90	57	1.4
	1 1/2	3	208-230/460	1.5	6.2/3.1	6.9/3.5	17 1/4	6 3/8	9 1/16	5 5/8	ML 80	35	
	1 1/2	3	575	1.5	2.48	3.65	17 1/4	6 3/8	9 1/16	5 5/8	ML 80	35	
CHI 12-15	2	3	208-230/460	1.5	8.6/4.3	9.1/4.75	19 11/16	6 13/16	9 1/16	7	ML 90	52	1.4
	2	3	575	1.5	3.8	5.7	19 11/16	6 13/16	9 1/16	7	ML 90	52	
CHI 12-20	3	3	208-230/460	1.4	12.7/7.3	12.7/7.3	21 5/16	9 15/16	9 1/16	7	ML 100	60	1.4