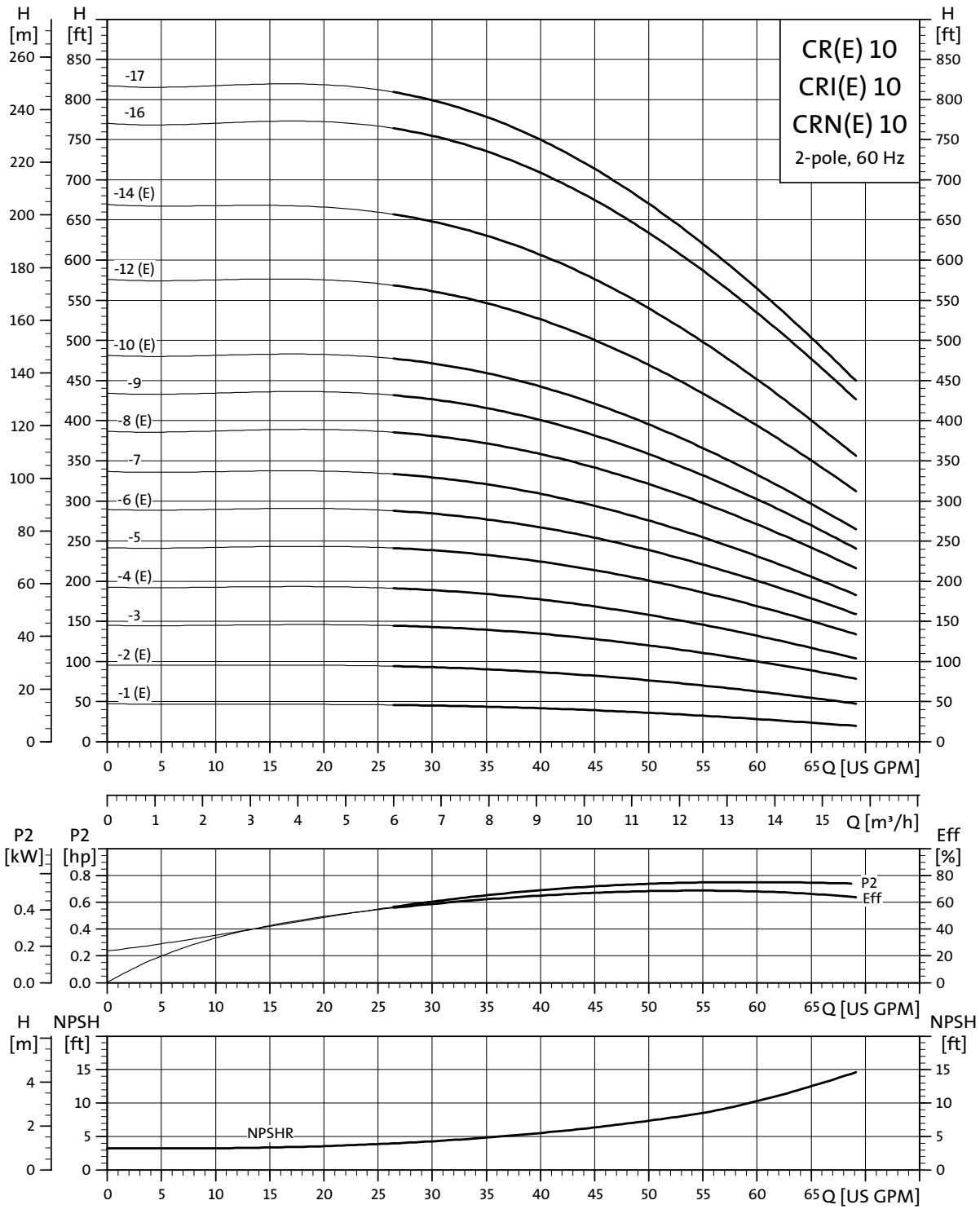


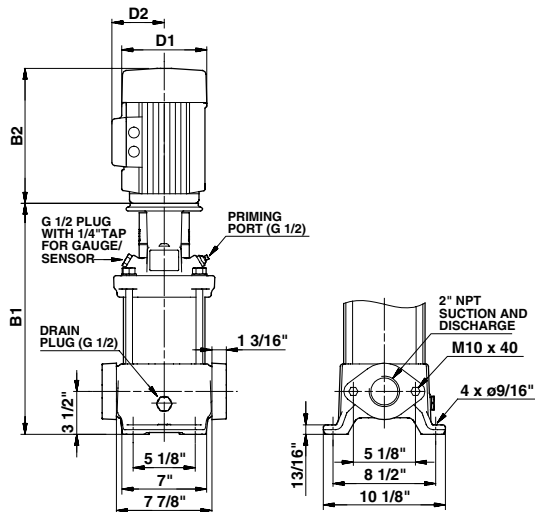
Performance curves

CR(E), CRI(E), CRN(E) 10

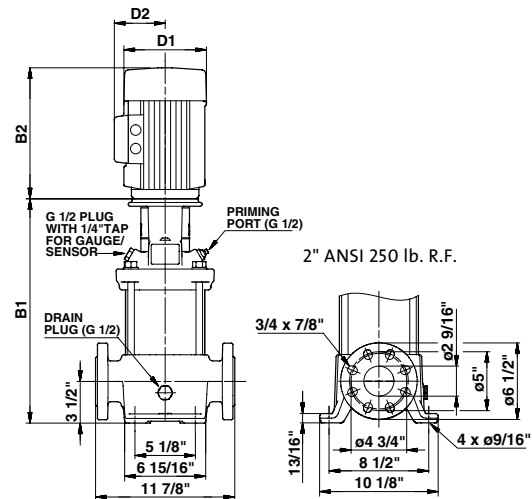


TM02 7221 3704

Dimensional sketches



TM03 1460 2205



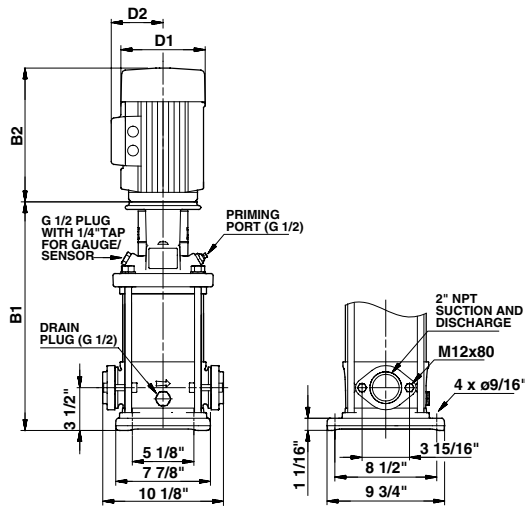
TM03 1461 2205

Dimensions and weights

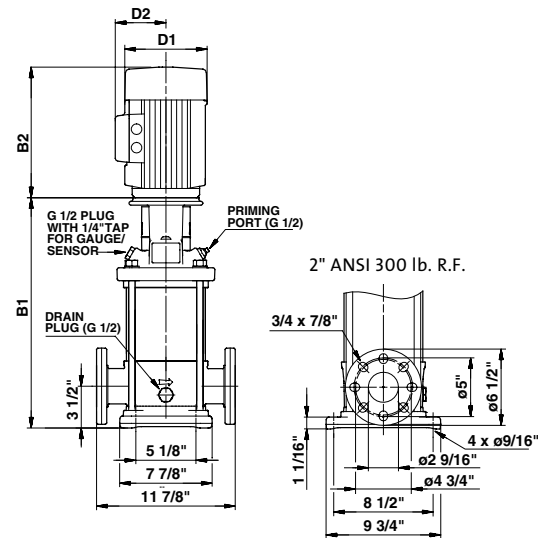
Pump type	Hp	Ph	Voltage	NEMA Frame size	Oval B1	ANSI B1	TEFC				ODP				Oval Ship		MLE				Oval Ship	
							D1	D2	Oval B1+B2	ANSI B1+B2	D1	D2	Oval B1+B2	ANSI B1+B2	Wt. ¹ [lbs.]	Wt. ¹ [lbs.]	D1	D2	Oval B1+B2	ANSI B1+B2	Wt. ¹ [lbs.]	Wt. ¹ [lbs.]
CR(E) 10-1	3/4	1	115/208-230	56C	15 1/4	15 1/4	6 1/4	5	25 1/4	25 1/4	-	-	-	-	97	103	5 1/2	5 1/2	22 7/8	22 7/8	90	92
			208-230/460	56C	15 1/4	15 1/4	5 5/8	4 5/8	24 1/8	24 1/8	-	-	-	-	79	85	-	-	-	-	-	-
CR(E) 10-2	1 1/2	3	115/208-230	56C	15 1/4	15 1/4	7 1/4	5 3/4	27	27	-	-	-	-	112	119	5 1/2	5 1/2	24 1/2	24 1/2	108	111
			208-230/460	56C	15 1/4	15 1/4	5 5/8	4 5/8	24 1/8	24 1/8	-	-	-	-	94	100	7	6 5/8	26 7/8	26 7/8	121	123
CR 10-3	3	3	115/208-230	182TC	17 1/8	17 1/8	8 5/8	6 7/8	31 5/8	31 5/8	-	-	-	-	163	169	-	-	-	-	-	-
			208-230/460	182TC	17 1/8	17 1/8	7 1/8	4 3/8	28 7/8	28 7/8	-	-	-	-	128	137	-	-	-	-	-	-
CR(E) 10-4	3	3	115/208-230	182TC	18 3/8	18 3/8	8 5/8	6 7/8	32 7/8	32 7/8	-	-	-	-	165	172	-	-	-	-	-	-
			208-230/460	182TC	18 3/8	18 3/8	7 1/8	4 3/8	30 1/8	30 1/8	-	-	-	-	130	137	7	6 5/8	31 7/8	31 7/8	162	164
CR 10-5	5	3	208-230	182TC	19 1/2	19 1/2	10 5/8	7 1/2	34 7/8	34 7/8	-	-	-	-	183	189	-	-	-	-	-	-
			208-230/460	182TC	19 1/2	19 1/2	7 1/8	4 3/8	32 3/4	32 3/4	-	-	-	-	139	146	-	-	-	-	-	-
CR(E) 10-6	5	3	208-230	182TC	20 3/4	20 3/4	10 5/8	7 1/2	36 1/8	36 1/8	-	-	-	-	185	194	-	-	-	-	-	-
			208-230/460	182TC	20 3/4	20 3/4	7 1/8	4 3/8	34	34	-	-	-	-	141	148	8 3/4	7 1/2	36 1/4	36 1/4	199	201
CR 10-7	5	3	208-230	182TC	21 7/8	21 7/8	10 5/8	7 1/2	37 1/4	37 1/4	-	-	-	-	187	196	-	-	-	-	-	-
			208-230/460	182TC	21 7/8	21 7/8	7 1/8	4 3/8	37 7/8	35 1/8	-	-	-	-	144	150	-	-	-	-	-	-
CR(E) 10-8	7 1/2	3	208-230	213TC	23 3/8	23 3/8	10 1/4	7 1/2	38 3/4	38 3/4	-	-	-	-	211	218	-	-	-	-	-	-
			208-230/460	213TC	23 3/8	23 3/8	8 3/4	5 3/8	38 3/4	39	-	-	-	-	203	210	8 3/4	7 1/2	-	39	-	235
CR 10-9	7 1/2	3	208-230	213TC	24 1/2	24 1/2	10 1/4	7 1/2	39 7/8	39 7/8	-	-	-	-	213	220	-	-	-	-	-	-
			208-230/460	213TC	24 1/2	24 1/2	8 3/4	5 3/8	39 7/8	40 1/8	-	-	-	-	205	212	-	-	-	-	-	-
CR(E) 10-10	7 1/2	3	208-230	213TC	25 3/4	25 3/4	10 1/4	7 1/2	41 1/8	41 1/8	-	-	-	-	216	222	-	-	-	-	-	-
			208-230/460	213TC	25 3/4	25 3/4	8 3/4	5 3/8	41 1/8	41 3/8	-	-	-	-	230	214	8 3/4	7 1/2	-	41 3/8	-	239
CR(E) 10-12	10	3	230	213TC	-	28 1/8	10 1/4	10 3/8	-	44	-	-	-	-	251	-	-	-	-	-	-	-
			208-230/460	213TC	-	28 1/8	8 3/4	5 3/8	-	43 3/4	-	-	-	-	202	-	8 3/4	7 1/2	-	43 3/4	-	251
CR(E) 10-14	10	3	230	213TC	-	30 1/2	10 1/4	10 3/8	-	46 3/8	-	-	-	255	-	-	-	-	-	-	-	-
			208-230/460	213TC	-	30 1/2	8 3/4	5 3/8	-	46 1/8	-	-	-	-	207	-	8 3/4	7 1/2	-	51	-	255
CR 10-16	15	3	208-230/460	254TC	-	35 3/8	10 3/8	8 3/4	-	52	10 5/8	7 3/8	-	51 1/2	-	352	-	-	-	-	-	-
CR 10-17	15	3	208-230/460	254TC	-	37 3/4	16 5/8	10 3/8	-	54 3/8	10 5/8	7 3/8	-	53 7/8	-	359	-	-	-	-	-	-

Weights are based on pump with TEFC motor (see price list for individual weights)
All dimensions in inches unless otherwise noted.

Dimensional sketches



TM03 1458 2205



TM03 1459 2205

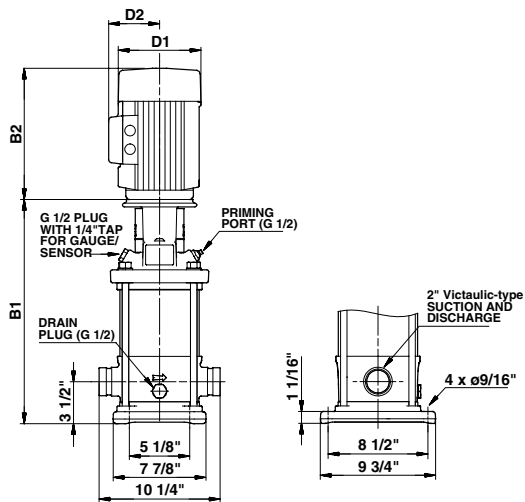
Dimensions and weights

Pump type	Hp	Ph	Voltage	NEMA Frame size	Oval B1	ANSI B1	TEFC				ODP				MLE		Oval Ship Wt. ¹ [lbs.]	ANSI Ship Wt. ¹ [lbs.]				
							D1	D2	Oval B1+B2	ANSI B1+B2	D1	D2	Oval B1+B2	ANSI B1+B2	D1	D2			Oval B1+B2	ANSI B1+B2		
CRI(E) 10-1	3/4	1	115/230	56C	15 1/4	15 1/4	6 1/4	5	25 1/4	25 1/4	-	-	-	-	97	103	5 1/2	5 1/2	23 1/8	23 1/8	79	83
			208-230/460	56C	15 1/4	15 1/4	5 5/8	4 5/8	24 1/8	24 1/8	-	-	-	-	79	85	-	-	-	-	-	-
CRI(E) 10-2	1 1/2	3	115/208-230	56C	15 1/4	15 1/4	7 1/4	5 3/4	27	27	-	-	-	-	112	119	5 1/2	5 1/2	24 3/8	24 3/8	95	102
			208-230/460	56C	15 1/4	15 1/4	5 5/8	4 5/8	24 1/8	24 1/8	-	-	-	-	94	100	7	6 5/8	26 3/4	26 3/4	110	116
CRI 10-3	3	3	115/208-230	182TC	17 1/8	17 1/8	8 5/8	6 7/8	31 5/8	31 5/8	-	-	-	-	163	169	-	-	-	-	-	-
			208-230/460	182TC	17 1/8	17 1/8	7 1/8	4 3/8	28 7/8	28 7/8	-	-	-	-	128	137	-	-	-	-	-	-
CRI(E) 10-4	3	1	115/208-230	182TC	18 3/8	18 3/8	8 5/8	6 7/8	32 7/8	32 7/8	-	-	-	-	165	172	-	-	-	-	-	-
			208-230/460	182TC	18 3/8	18 3/8	7 1/8	4 3/8	30 1/8	30 1/8	-	-	-	-	130	137	7	6 5/8	31 3/4	31 3/4	149	156
CRI 10-5	5	3	208-230	182TC	19 1/2	19 1/2	10 5/8	7 1/2	34 7/8	34 7/8	-	-	-	-	183	189	-	-	-	-	-	-
			208-230/460	182TC	19 1/2	19 1/2	7 1/8	4 3/8	32 3/4	32 3/4	-	-	-	-	139	146	-	-	-	-	-	-
CRI(E) 10-6	5	3	208-230	182TC	20 3/4	20 3/4	10 5/8	7 1/2	36 1/8	36 1/8	-	-	-	-	185	194	-	-	-	-	-	-
			208-230/460	182TC	20 3/4	20 3/4	7 1/8	4 3/8	34	34	-	-	-	-	141	148	8 3/4	7 1/2	36 1/4	36 1/4	186	192
CRI 10-7	5	3	208-230	182TC	21 7/8	21 7/8	10 5/8	7 1/2	37 1/4	37 1/4	-	-	-	-	187	196	-	-	-	-	-	-
			208-230/460	182TC	21 7/8	21 7/8	7 1/8	4 3/8	37 7/8	35 1/8	-	-	-	-	144	150	-	-	-	-	-	-
CRI(E) 10-8	7 1/2	1	208-230	213TC	23 3/8	23 3/8	10 1/4	7 1/2	38 3/4	38 3/4	-	-	-	-	211	218	-	-	-	-	-	-
			208-230/460	213TC	23 3/8	23 3/8	8 3/4	5 3/8	38 3/4	39	-	-	-	-	203	210	8 3/4	7 1/2	38 7/8	38 7/8	221	228
CRI 10-9	7 1/2	3	208-230	213TC	24 1/2	24 1/2	10 1/4	7 1/2	39 7/8	39 7/8	-	-	-	-	213	220	-	-	-	-	-	-
			208-230/460	213TC	24 1/2	24 1/2	8 3/4	5 3/8	39 7/8	40 1/8	-	-	-	-	205	212	-	-	-	-	-	-
CRI(E) 10-10	7 1/2	1	208-230	213TC	25 3/4	25 3/4	10 1/4	7 1/2	41 1/8	41 1/8	-	-	-	-	216	222	-	-	-	-	-	-
			208-230/460	213TC	25 3/4	25 3/4	8 3/4	5 3/8	41 1/8	41 3/8	-	-	-	-	230	214	8 3/4	7 1/2	41 1/4	41 1/4	248	232
CRI(E) 10-12	10	3	230	213TC	-	28 1/8	10 1/4	10 3/8	-	44	-	-	-	-	251	-	-	-	-	-	-	-
			208-230/460	213TC	-	28 1/8	8 3/4	5 3/8	-	43 3/4	-	-	-	-	202	202	8 3/4	7 1/2	-	43 5/8	-	244
CRI(E) 10-14	10	1	230	213TC	-	30 1/2	10 1/4	10 3/8	-	46 3/8	-	-	-	-	255	-	-	-	-	-	-	-
			208-230/460	213TC	-	30 1/2	8 3/4	5 3/8	-	46 1/8	-	-	-	-	207	207	8 3/4	7 1/2	-	46	-	248
CRI 10-16	15	3	208-230/460	254TC	-	35 3/8	10 3/8	8 3/4	-	52	10 5/8	7 3/8	-	51 1/2	352	-	-	-	-	-	-	
CRI 10-17	15	3	208-230/460	254TC	-	37 3/4	16 5/8	10 3/8	-	54 3/8	10 5/8	7 3/8	-	53 7/8	359	-	-	-	-	-	-	

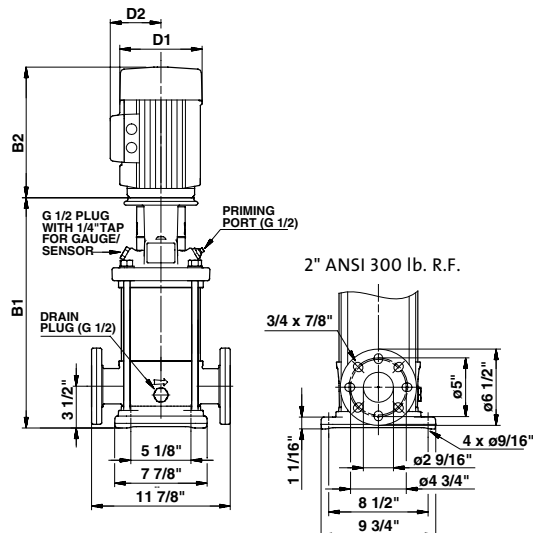
Weights based on pump with TEFC motor (see price list for individual weights)

All dimensions in inches unless otherwise noted.

Dimensional sketches



TM03 1457 2205



TM03 1459 2205

Dimensions and weights

Pump type	Hp	Ph	Voltage	NEMA Frame size	PJE B1	ANSI B1	TEFC				ODP				PJE ANSI Ship		MLE				PJE ANSI Ship	
							D1	D2	PJE B1+B2	ANSI B1+B2	D1	D2	PJE B1+B2	ANSI B1+B2	Wt. ¹ [lbs.]	Wt. ¹ [lbs.]	D1	D2	PJE B1+B2	ANSI B1+B2	Wt. ¹ [lbs.]	Wt. ¹ [lbs.]
CRN(E) 10-1	3/4	1	115/208-230	56C	15 1/4	15 1/4	6 1/4	5	25 1/4	25 1/4	-	-	-	-	92	103	5 1/2	5 1/2	23 1/8	23 1/8	74	83
		3	208-230/460	56C	15 1/4	15 1/4	5 5/8	4 5/8	24 1/8	24 1/8	-	-	-	-	74	85	-	-	-	-	-	-
CRN(E) 10-2	1 1/2	1	115/208-230	56C	15 1/4	15 1/4	7 1/4	5 3/4	27	27	-	-	-	-	110	119	5 1/2	5 1/2	24 3/8	24 3/8	67	76
		3	208-230/460	56C	15 1/4	15 1/4	5 5/8	4 5/8	24 1/8	24 1/8	-	-	-	-	89	100	7	6 5/8	26 3/4	26 3/4	105	116
CRN 10-3	3	1	115/208-230	182TC	17 1/8	17 1/8	8 5/8	6 7/8	31 5/8	31 5/8	-	-	-	-	161	169	-	-	-	-	-	-
		3	208-230/460	182TC	17 1/8	17 1/8	7 1/8	4 3/8	28 7/8	28 7/8	-	-	-	-	126	137	-	-	-	-	-	-
CRN(E) 10-4	3	1	115/208-230	182TC	18 3/8	18 3/8	8 5/8	6 7/8	32 7/8	32 7/8	-	-	-	-	161	172	-	-	-	-	-	-
		3	208-230/460	182TC	18 3/8	18 3/8	7 1/8	4 3/8	30 1/8	30 1/8	-	-	-	-	128	137	7	6 5/8	31 1/4	31 1/4	147	156
CRN 10-5	5	1	208-230	182TC	19 1/2	19 1/2	10 5/8	7 1/2	34 7/8	34 7/8	-	-	-	-	180	189	-	-	-	-	-	-
		3	208-230/460	182TC	19 1/2	19 1/2	7 1/8	4 3/8	32 3/4	32 3/4	-	-	-	-	137	146	-	-	-	-	-	-
CRN(E) 10-6	5	1	208-230	182TC	20 3/4	20 3/4	10 5/8	7 1/2	36 1/8	36 1/8	-	-	-	-	183	194	-	-	-	-	-	-
		3	208-230/460	182TC	20 3/4	20 3/4	7 1/8	4 3/8	34	34	-	-	-	-	139	148	8 3/4	7 1/2	35 3/8	35 3/8	184	192
CRN 10-7	5	1	208-230	182TC	21 7/8	21 7/8	10 5/8	7 1/2	37 1/4	37 1/4	-	-	-	-	185	196	-	-	-	-	-	-
		3	208-230/460	182TC	21 7/8	21 7/8	7 1/8	4 3/8	35 1/8	35 1/8	-	-	-	-	141	150	-	-	-	-	-	-
CRN(E) 10-8	7 1/2	1	208-230	213TC	23 3/8	23 3/8	10 1/4	7 1/2	38 3/4	38 3/4	-	-	-	-	207	218	-	-	-	-	-	-
		3	208-230/460	213TC	23 3/8	23 3/8	8 3/4	5 3/8	39	39	-	-	-	-	199	210	8 3/4	7 1/2	38 7/8	38 7/8	217	228
CRN 10-9	7 1/2	1	208-230	213TC	24 1/2	24 1/2	10 1/4	7 1/2	39 7/8	39 7/8	-	-	-	-	209	220	-	-	-	-	-	-
		3	208-230/460	213TC	24 1/2	24 1/2	8 3/4	5 3/8	40 1/8	40 1/8	-	-	-	-	201	212	-	-	-	-	-	-
CRN(E) 10-10	7 1/2	1	208-230	213TC	25 3/4	25 3/4	10 1/4	7 1/2	41 1/8	41 1/8	-	-	-	-	211	222	-	-	-	-	-	-
		3	208-230/460	213TC	25 3/4	25 3/4	8 3/4	5 3/8	41 3/8	41 3/8	-	-	-	-	203	214	8 3/4	7 1/2	41 1/4	41 1/4	221	232
CRN(E) 10-12	10	1	230	213TC	28 1/8	28 1/8	10 1/4	10 3/8	44	44	-	-	-	-	242	251	-	-	-	-	-	-
		3	208-230/460	213TC	28 1/8	28 1/8	8 3/4	5 3/8	43 3/4	43 3/4	-	-	-	-	191	202	8 3/4	7 1/2	43 5/8	43 5/8	233	244
CRN(E) 10-14	10	1	230	213TC	30 1/2	30 1/2	10 1/4	10 3/8	46 3/8	46 3/8	-	-	-	-	246	255	-	-	-	-	-	-
		3	208-230/460	213TC	30 1/2	30 1/2	8 3/4	5 3/8	46 1/8	46 1/8	-	-	-	-	196	207	8 3/4	7 1/2	46	46	237	248
CRN 10-16	15	3	208-230/460	254TC	35 3/8	35 3/8	10 3/8	8 3/4	52	52	10 5/8	7 3/8	51 1/2	51 1/2	343	352	-	-	-	-	-	-
CRN 10-17	15	3	208-230/460	254TC	37 3/4	37 3/4	16 5/8	10 3/8	53 7/8	54 3/8	10 5/8	7 3/8	8 3/4	54 3/8	348	359	-	-	-	-	-	-

Weights are based on pump with TEFC motor (see price list for individual weights)
All dimensions in inches unless otherwise noted.