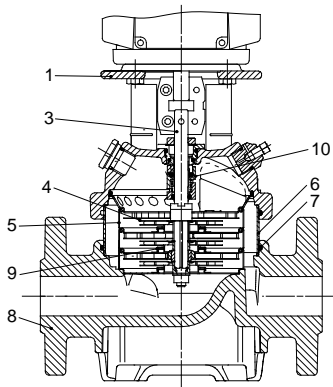


CR(E) 1s, 1, 3, 5, 10, 15 and 20



TM02 1198 0601 - GR7377 - GR7379

Sectional drawing



TM02 1194 1403

Materials: CR(E)

Pos.	Designation	Materials	AISI/ASTM
1	Pump head	Cast iron	A 48-30 B
3	Shaft	Stainless steel	AISI 316 ¹⁾ AISI 431 ²⁾
4	Impeller	Stainless steel	AISI 304
5	Chamber	Stainless steel	AISI 304
6	Outer sleeve	Stainless steel	AISI 304
7	O-ring for outer sleeve	EPDM or FKM	
8	Base	Cast iron	A 48-30 B
9	Neck ring	PTFE	
10	Shaft seal	Cartridge type	
	Bearing rings	Silicon carbide	
	Rubber parts	EPDM or FKM	
12	FJG flange	Cast iron	A 48-30 B

¹⁾ CR(E) 1s, 1, 3, 5

²⁾ CR(E) 10, 15, 20

³⁾ Stainless steel available on request.

⁴⁾ CF 8M is cast equivalent of AISI 316 stainless steel.

⁵⁾ CRI(E)/CRN(E) 1s, 1, 3, 5

⁶⁾ CRN(E) 10, 15, 20

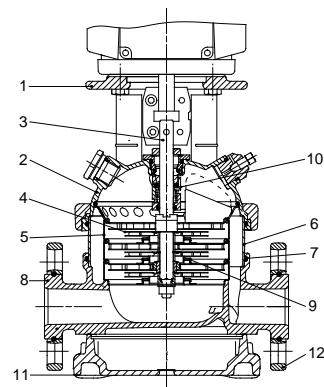
⁷⁾ CRI(E) 10, 15, 20

CRI(E), CRN(E) 1s, 1, 3, 5, 10, 15 and 20



TM02 1808 2001 - GR7373 - GR7375

Sectional drawing



TM03 2156 3805

Materials: CRI(E), CRN(E)

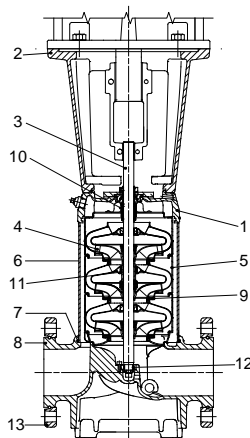
Pos.	Designation	Materials	AISI/ASTM
1	Pump head	Cast iron ³⁾	A 48-30 B
2	Pump head cover	Stainless steel	CF 8M ⁴⁾
3	Shaft	Stainless steel	AISI 316 ⁵⁾ AISI 329 ⁶⁾ AISI 431 ⁷⁾
8	Base	Stainless steel	CF 8M ⁴⁾
9	Neck ring	PTFE	
10	Shaft seal	Cartridge type	
11	Base plate	Cast iron ³⁾	A 48-30 B
	Bearing rings	Silicon carbide	
	Rubber parts	EPDM or FKM	
CRI(E)			
4	Impeller	Stainless steel	AISI 304
5	Chamber	Stainless steel	AISI 304
6	Outer sleeve	Stainless steel	AISI 304
7	O-ring for outer sleeve	EPDM or FKM	
12	FGJ flange ring	Ductile iron ³⁾	A 65-45-12
	Oval flange	Stainless steel	AISI 316
CRN(E)			
4	Impeller	Stainless steel	AISI 316
5	Chamber	Stainless steel	AISI 316
6	Outer sleeve	Stainless steel	AISI 316
7	O-ring for outer sleeve	EPDM or FKM	
12	FGJ flange ring	Ductile iron ³⁾	A 65-45-12

CR(E) 32, 45, 64 and 90



TM01 2150 1298

Sectional drawing



TM03 2157 3805

Materials: CR(E)

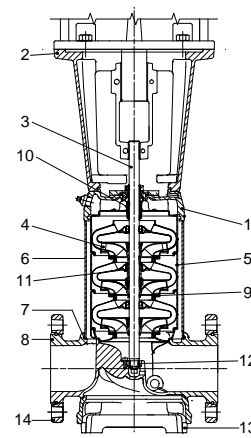
Pos.	Designation	Materials	AISI/ASTM
1	Pump head	Ductile iron	A 65-45-12
2	Motor stool	Cast iron	A 48-30 B
3	Shaft	Stainless steel	AISI 431
4	Impeller	Stainless steel	AISI 304
5	Chamber	Stainless steel	AISI 304
6	Outer sleeve	Stainless steel	AISI 304
7	O-ring for outer sleeve	EPDM or FKM	
8	Base	Ductile iron	A 65-45-12
9	Neck ring	Acoflon 215	
10	Shaft seal	Cartridge type	
11	Bearing ring	Bronze	
12	Bottom bearing ring	Tungsten carbide/ Tungsten carbide	
13	Flange ring	Ductile iron ²⁾	A 65-45-12
	Rubber parts	EPDM or FKM	

CRN(E) 32, 45, 64 and 90



TM02 7399 3403

Sectional drawing



TM03 2158 3805

Materials: CRN(E)

Pos.	Designation	Materials	AISI/ASTM
1	Pump head	Stainless steel	CF 8M ¹⁾
2	Motor stool	Cast iron	A 48-30 B
3	Shaft	Stainless steel	SAF 2205
4	Impeller	Stainless steel	AISI 316
5	Chamber	Stainless steel	AISI 316
6	Outer sleeve	Stainless steel	AISI 316
7	O-ring for outer sleeve	EPDM or FKM	
8	Base	Stainless steel	CF 8M ¹⁾
9	Neck ring	Acoflon 215	
10	Shaft seal	Cartridge type	
11	Bearing ring	Carbon-graphite filled PTFE	
12	Bottom bearing ring	Tungsten carbide/ Tungsten carbide	
13	Base plate	Ductile iron ²⁾	A 65-45-12
14	Flange ring	Ductile iron ²⁾	A 65-45-12
	Rubber parts	EPDM or FKM	

¹⁾ CF 8M is cast equivalent of AISI 316 stainless steel.

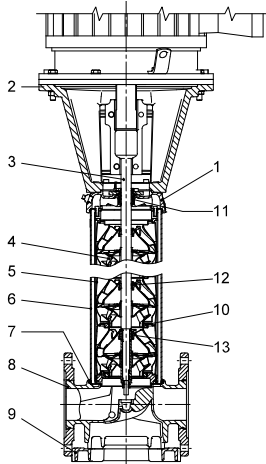
²⁾ Stainless steel available on request.

CR(E) 120 and 150



GrA3731

Sectional drawing



TM03 8835 2607

Materials: CR(E)

Pos.	Designation	Materials	AISI/ASTM
1	Pump head	Ductile iron	A 536 65-45-12
2	Motor stool (15-60 Hp)	Cast iron	A48-30 B
	Motor stool (75-100 Hp)	Ductile iron	A 536 65-45-12
3	Shaft	Stainless steel	AISI 431
4	Impeller	Stainless steel	AISI 304
5	Chamber	Stainless steel	AISI 304
6	Outer sleeve	Stainless steel	AISI 316
7	O-ring for outer sleeve	EPDM or FKM	
8	Base	Ductile iron	A 536 65-45-12
9	Base plate	Ductile iron	A 536 65-45-12
10	Neck ring	PTFE	
11	Shaft seal ¹⁾	Cartridge type	
12	Support bearing	PTFE	
13	Bearing rings	Silicone carbide	
	Rubber parts	EPDM or FKM	

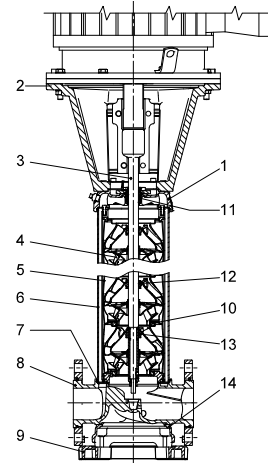
¹⁾ Ø22 mm shaft, 15-60 Hp. Ø32 mm shaft, 75-100 Hp.

CRN(E) 120 and 150



GrA3732 - GrA3735

Sectional drawing



TM03 8836 2607

Materials: CRN(E)

Pos.	Designation	Materials	AISI/ASTM
1	Pump head	Stainless steel	A 351 CF 8M
2	Motor stool (15-60 Hp)	Cast iron	A48-30 B
	Motor stool (75-100 Hp)	Ductile iron	A 536 65-45-12
3	Shaft	Stainless steel	SAF 2205
4	Impeller	Stainless steel	AISI 316
5	Chamber	Stainless steel	AISI 316
6	Outer sleeve	Stainless steel	AISI 316
7	O-ring for outer sleeve	EPDM or FKM	
8	Base	Stainless steel	A 351 CF 8M
9	Base plate	Ductile iron ¹⁾	A 536 65-45-12
10	Neck ring	PTFE	
11	Shaft seal ²⁾	Cartridge type	
12	Support bearing	PTFE	
13	Bearing rings	Silicone carbide	
14	Base plate	Ductile iron ¹⁾	A 536 65-45-12
	Rubber parts	EPDM or FKM	

¹⁾ Stainless steel available on request.

²⁾ Ø22 mm shaft, 15-60 Hp. Ø32 mm shaft, 75-100 Hp.