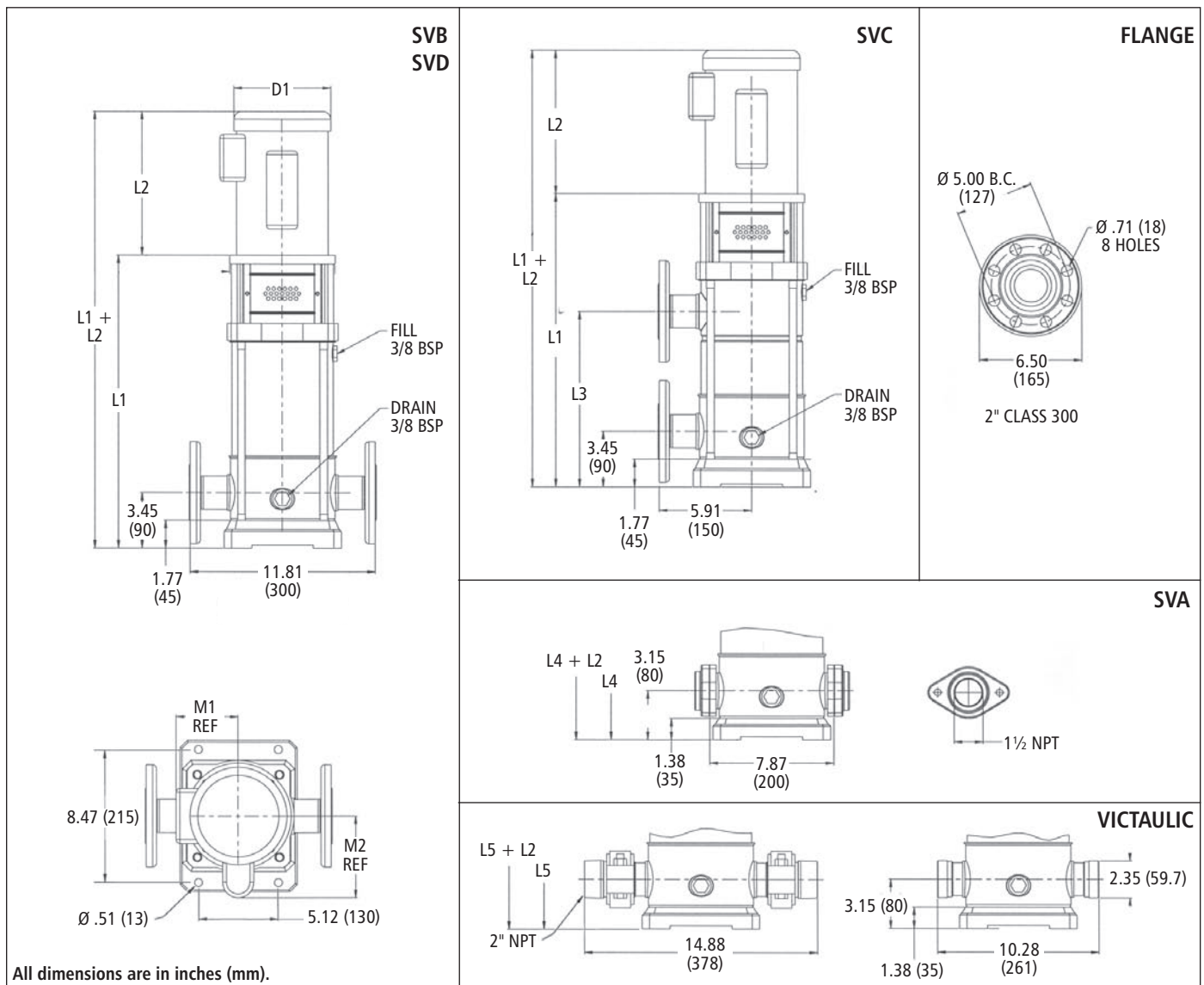


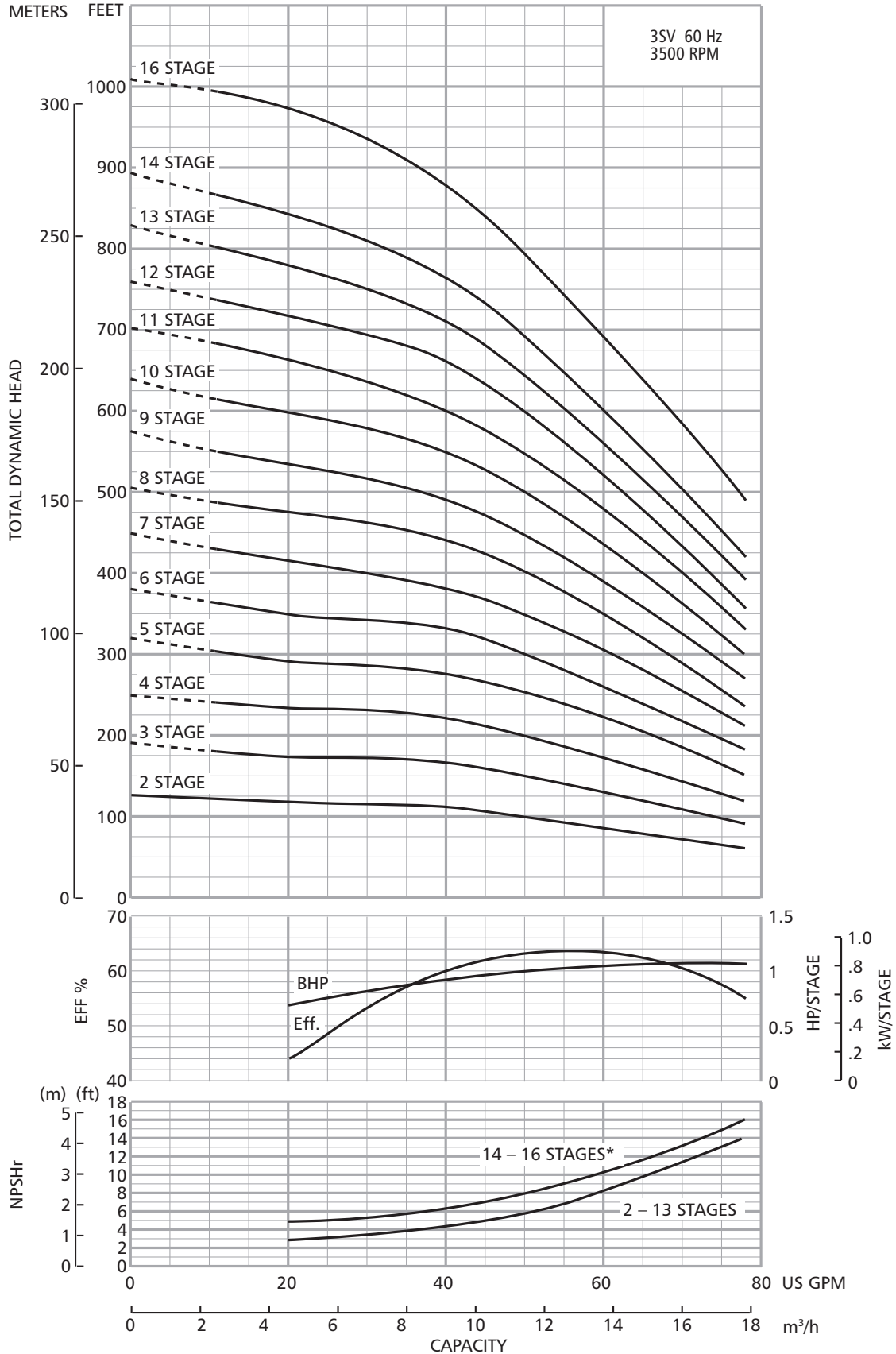
Dimensions and Weights

3SV Series 3500 RPM



Stage	Frame (1-Phase)		Frame (3-Phase)		HP	L1	L2		L3	L4	L5	M1 (ref.)	M2 (ref.)	D1 (max.)		Weights (lb)		
	ODP	TEFC	ODP	TEFC			ODP	TEFC						L3	L4	L5	ODP	TEFC
2	56C		56C		2	15.75	11.19	12.06		15.31	15.31	5.75	5.56	7.19	7.19	33	43	51
3					3	17.25	11.56	13.88		16.81	16.81		5.50			35	51	56
4	182-4TC		182-4TC		5	18.75	13.94	15.44	11.81	18.31	18.31	6.88	6.63	8.50	8.50	37	75	85
5						20.25			12.69	19.81	19.81							
6					7½	23.25	13.94	15.44	15.69	22.81	22.81	6.88	6.63	8.50	8.50	44	101	124
7	213TC		182-4TC			24.69			17.19	24.25	24.25							
8																		
9					10	28.88	15.50	15.50	20.19		28.44	8.06	8.77	10.25	10.25	47	130	151
10	213TC		213TC 215TC			30.38			21.69		29.94							
11																		
12					15	33.38	15.56	15.56	24.63		32.94	9.25		10.19	10.83	64	128	250
13			215TC 254TC			34.50					34.19							
14																		
16			254TC 256TC		20	35.88					37.19					72	220	280

3SV Curve 3500 RPM



* For vertical shaft installation only.