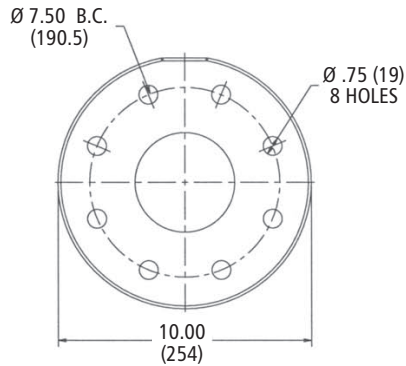
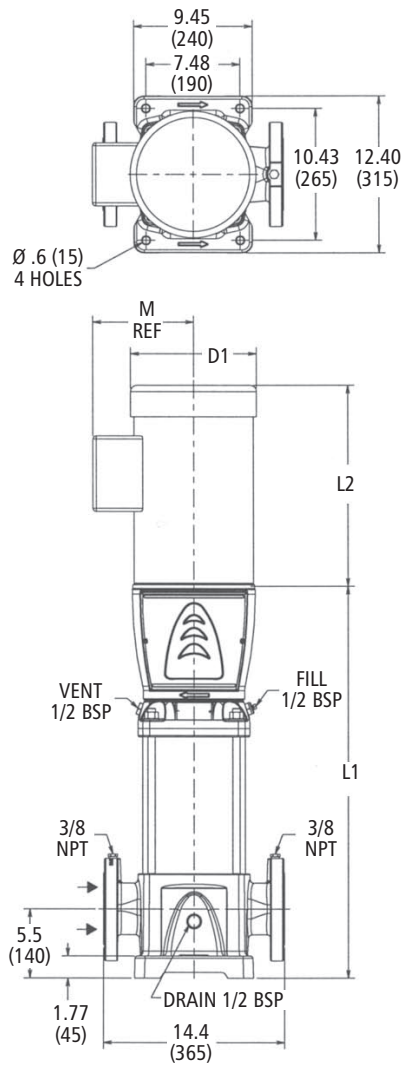
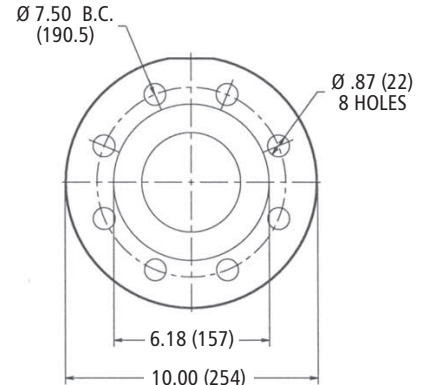


Dimensions and Weights

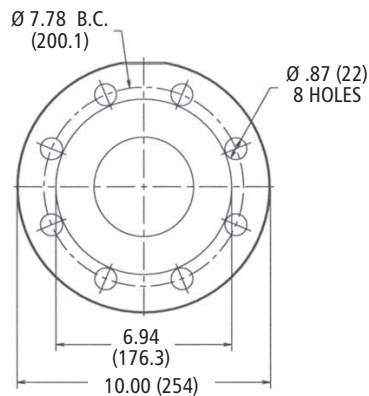
92SV Series 3500 RPM



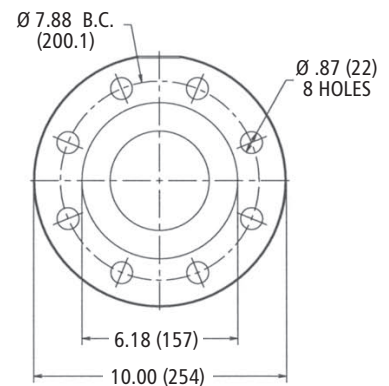
Cast Iron
4" Class 125 R.F.
(1 – 3 Stages)



316SS
4" Class 150 R.F.
(1 – 3 Stages)



Cast Iron
4" Class 250 R.F.
(4 – 6 Stages)



316SS
4" Class 300 R.F.
(4 – 6 Stages)

All dimensions are in inches (mm).

Stage	Frame (1-Phase)		Frame (3-Phase)		HP	L1	L2		M (ref.)	D1		Weights (lb)								
	ODP	TEFC	ODP	TEFC			ODP	TEFC		ODP	TEFC	Liquid End	ODP	TEFC						
1/1			215TC	254TC	15	23.19	15.56	16.56	9.25	10.19	10.31	185	128	250						
1			256TC	284TC	25	28.31	18	23.38	13.12	11.63	15.31	210	240	420						
2/2			284TC		30								20.12	325	445					
2/1					40	31.81	223	328	448											
2					50	31.28	231	382	592											
3/2			326TSC	364TSC	60	34.88	22.5	27.22	14.96	15.12	19	242	474	736						
3/1															75	38.44	24.12	252	500	762
3																				
4/2																				
4/1																				
4																				
5/2																				
5/1																				

92SV Curve 3500 RPM

