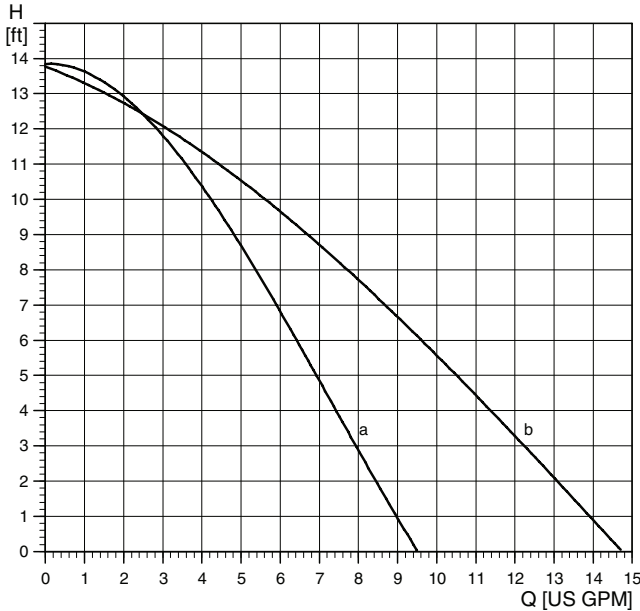


Technical data

UP Series
UP 15-18B5/B7



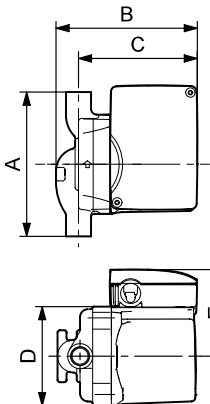
Flow range: 0-14.7 U.S. gpm
 Head range: 0-13.9 feet
 Motors: 2-pole, single-phase
 Max. liquid temperature: 230 °F (110 °C)
 Min. liquid temperature: 36 °F (2 °C)
 Max. system pressure: 145 psi

Note: If the UP pump is equipped with a timer, the maximum liquid temperature is 150 °F (66 °C).

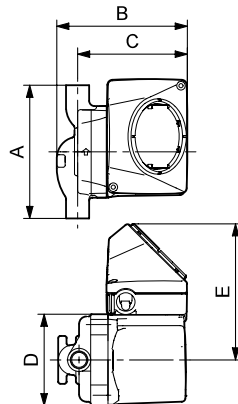
Model	Volts	Amps	Watts	Hp	Capacitor
UP 15-18B5	115	0.74	85	1/25	10µF/180 V
	230	0.4	90	1/25	2µF/400 V
UP 15-18B7	115	0.74	85	1/25	10µF/180 V
	230	0.4	96	1/25	2µF/400 V

Position	System type	Description
a	Open	UP 15-18B5
b	Open	UP 15-18B7

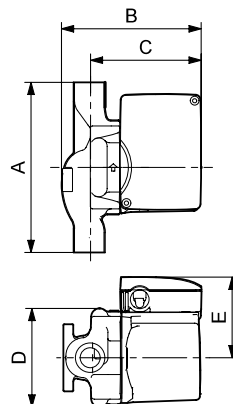
UP 15-18B5/LC



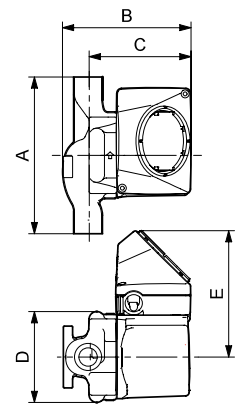
UP 15-18B5/TLC



UP 15-18B7/LC



UP 15-18B7/TLC



Model type	Product number		A	B	C	D	E	F	Connection type and size	Shipping weight [lbs]
	115 V	230 V								
UP 15-18B5	59896114	59896118	5	4 11/16	4	3 1/2	3 1/4	-	1/2" sweat	6
UP 15-18B5/LC	59896211	-	5	6 3/16	5 1/2	3 1/2	3 1/4	4	1/2" sweat	6.5
UP 15-18B5/TLC	59896212	-	5	6 3/16	5 1/2	3 1/2	3 1/4	4	1/2" sweat	6.5
UP 15-18B7	59896121	59896119	6 3/8	5 1/8	4	3 4/5	3 1/4	-	3/4" sweat	6.7
UP 15-18B7/LC	59896229	-	6 3/8	6 5/8	5 1/2	3 4/5	3 1/4	4	3/4" sweat	7.2
UP 15-18B7/TLC	59896230	-	6 3/8	6 5/8	5 1/2	3 4/5	3 1/4	4	3/4" sweat	7.2

Note: LC/TLC Models have 6-foot 3-prong power cord.