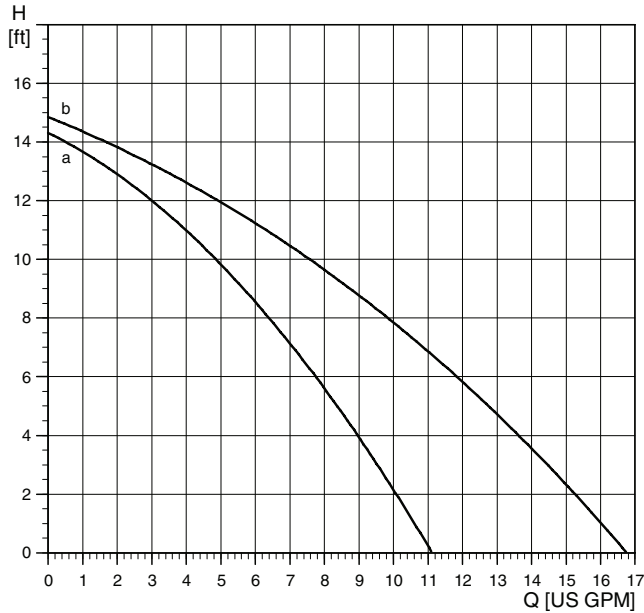


# Technical data

UP Series  
UP 15-42B5/B7



TM03 8430 1507

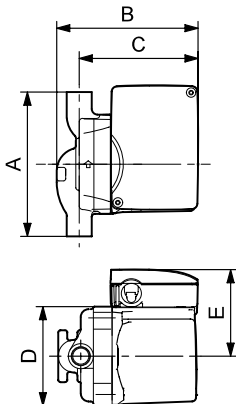
Flow range: 0-17 U.S. gpm  
 Head range: 0-15 feet  
 Motors: 2-pole, single-phase  
 Max. liquid temperature: 230 °F (110 °C)  
 Min. liquid temperature: 36 °F (2 °C)  
 Max. system pressure: 145 psi

**Note:** If the UP pump is equipped with a timer, the maximum liquid temperature is 150 °F (66 °C).

Model	Volts	Amps	Watts	Hp	Capacitor
UP 15-42 B5	115	0.74	85	1/25	10µF/180 V
	230	0.41	95	1/25	2µF/400 V
UP 15-42 B7	115	0.74	85	1/25	10µF/180 V
	230	0.41	95	1/25	2µF/400 V

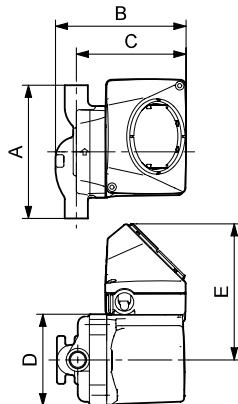
Position	System type	Description
a	Open	UP 15-18B5
b	Open	UP 15-18B7

UP 15-42B5/LC and B7



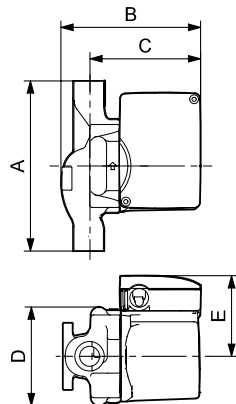
TM03 8545 1907

UP 15-42B5/TLC



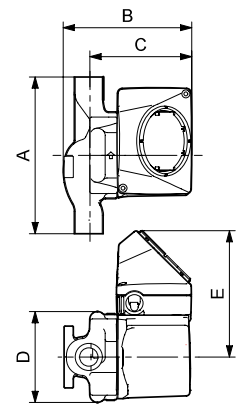
TM03 8546 1907

UP 15-42B7/LC



TM03 8547 1907

UP 15-42B7/TLC



TM03 8548 1907

Model type	Product number		A	B	C	D	E	F	Connection type and size	Shipping weight [lbs]
	115 V	230 V								
UP 15-42 B5	59896145	59896142	5	4 11/16	4	3 1/2	3 1/4	-	1/2" sweat	6.0
UP 15-42 B5/LC	59896233	-	5	6 3/16	5 1/2	3 1/2	3 1/4	-	1/2" sweat	6.5
UP 15-42 B5/TLC	59896234	-	5	6 3/16	5 1/2	3 1/2	3 1/4	-	1/2" sweat	6.5
UP 15-42 B7	59896146	59896149	6 3/8	5 1/8	4	3 4/5	3 1/4	-	3/4" sweat	6.7
UP 15-42 B7/LC	59896235	-	6 3/8	6 5/8	5 1/2	3 4/5	3 1/4	-	3/4" sweat	7.2
UP 15-42 B7/TLC	59896236	-	6 3/8	6 5/8	5 1/2	3 4/5	3 1/4	-	3/4" sweat	7.2

**Note:** LC/TLC Models have 6-foot 3-prong power cord.