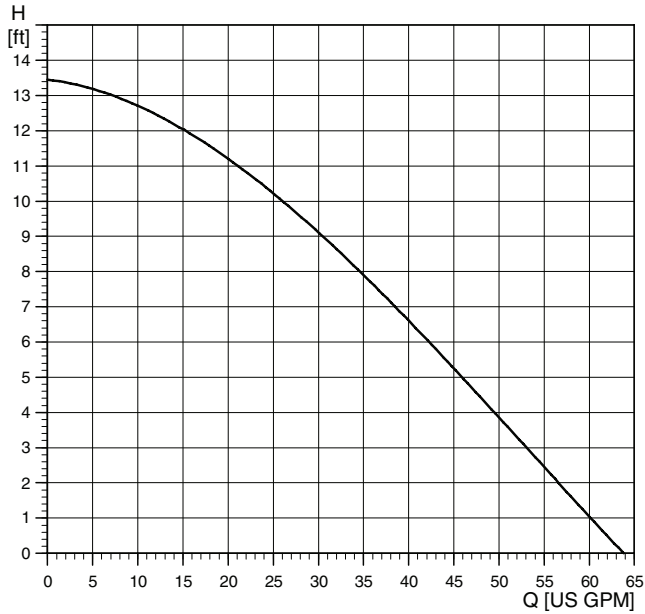


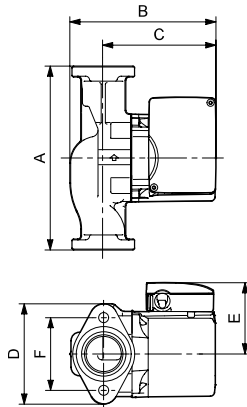
## UP 43



Flow range: 0-68 U.S. gpm  
 Head range: 0-13.5 feet  
 Motors: 2-pole, single-phase  
 Max. liquid temperature: 230 °F (110 °C)  
 Min. liquid temperature: 32 °F (0 °C)  
 Max. system pressure: 145 psi  
 Closed system (F) and open system (BF)

Model	Volts	Amps	Watts	Hp	Capacitor
UP 43-44F/BF	115	2.15	215	1/6	10µF/180 V
	230	1.07	220	1/6	2.5µF/380 V

UP 43-44F/BF



Model type	Product number		A	B	C	D	E	F	Connection type and size	Shipping weight [lbs]
	115 V	230 V								
UP 43-44F	52722437	52722438	8 1/2	6 11/16	5 3/16	4 3/4	3 1/2	3 7/16	GF 15/26 flange (2) 1/2" dia. bolt bores	13 1/2
UP 43-44BF	52722439	52722440	8 1/2	6 11/16	5 3/16	4 3/4	3 1/2	3 7/16	GF 15/26 flange (2) 1/2" dia. bolt bores	15